

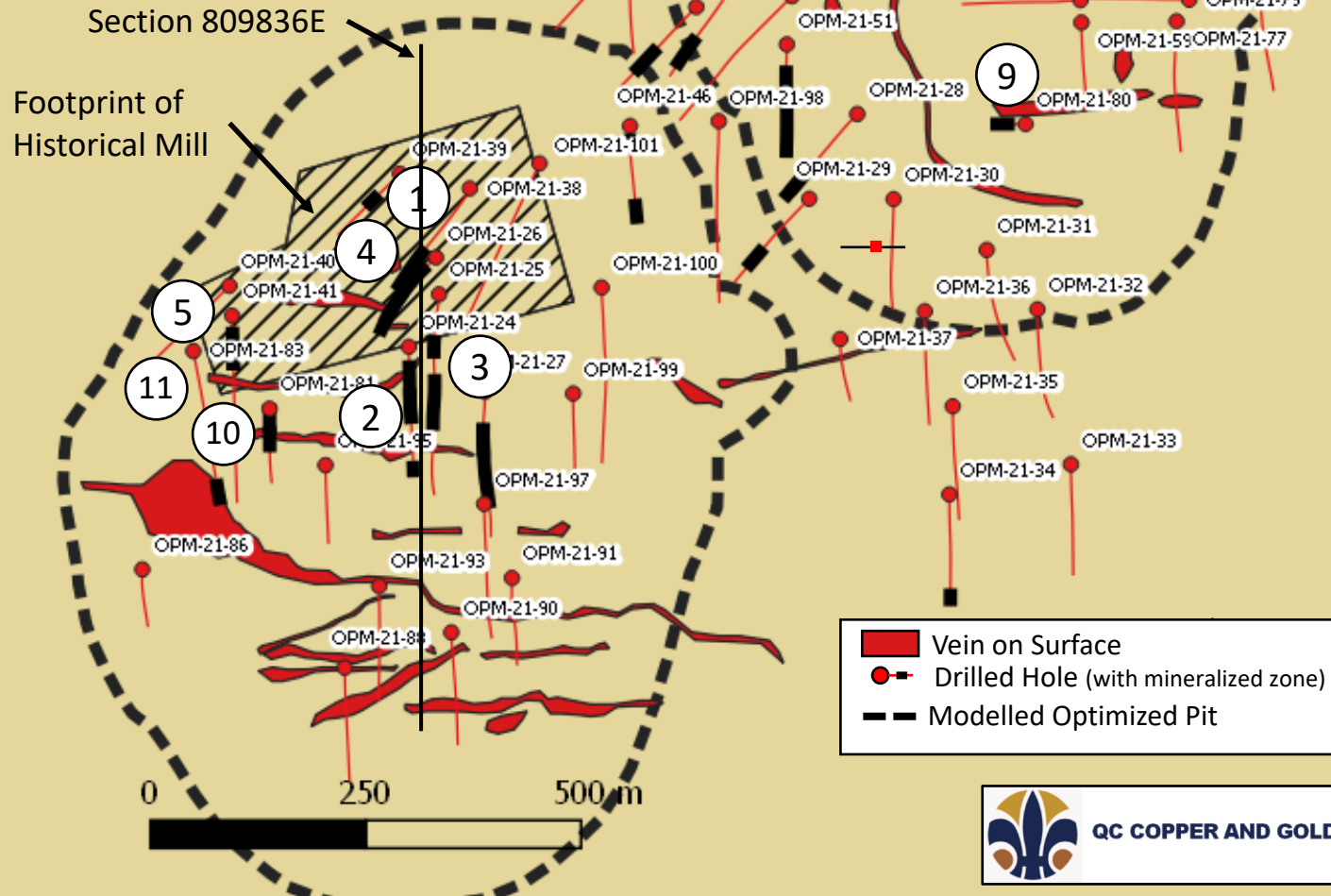


QC COPPER & GOLD

Opemiska Drill Sections: For June 28, 2021 News Release

QC Copper & Gold Inc. | TSXV: QCCU | OTC: QCCUF | www.qccopper.com

Assay Results Mill Zone (and Other New In-Pit Results)



- ① -OPM-21-38: From 132.0 to 196.0 m, **64 m @ 0.54% Cu-eq**
- ② -OPM-21-24: From 51.0 to 177.0 m, **126 m @ 0.44% Cu-eq**
- ③ -OPM-21-25: From 85.5 to 103.5 m, **18.0 m @ 0.80% Cu-eq**, and from 154.5 to 231.0, **76.5 m @ 0.54% Cu-eq**
- ④ -OPM-21-26: From 36.0 to 176.0 m, **140.0 m @ 0.44% Cu-eq**
- ⑤ -OPM-21-41: From 31.5 to 85.0 m, **53.5m @ 0.56% Cu-eq**
- ⑥ -OPM-21-54: From 117.7 to 141.0 m, **23.3 m @ 0.38% Cu-eq**
- ⑦ -OPM-21-57: From 182.0 to 185.0 m, **3.0 m @ 3.36% Cu-eq**
- ⑧ -OPM-21-58: From 117.0 to 130.0 m, **13.0 m @ 0.41% Cu-eq**
- ⑨ -OPM-21-80: From 31.5 to 51.0 m, **19.5 m @ 0.46% Cu-eq**
- ⑩ -OPM-21-81: From 3.0 to 31.5 m, **28.5 m @ 0.54% Cu-eq**
- ⑪ -OPM-21-83: From 244.0 to 267.0 m, **23.0 m @ 1.58% Cu-eq**



