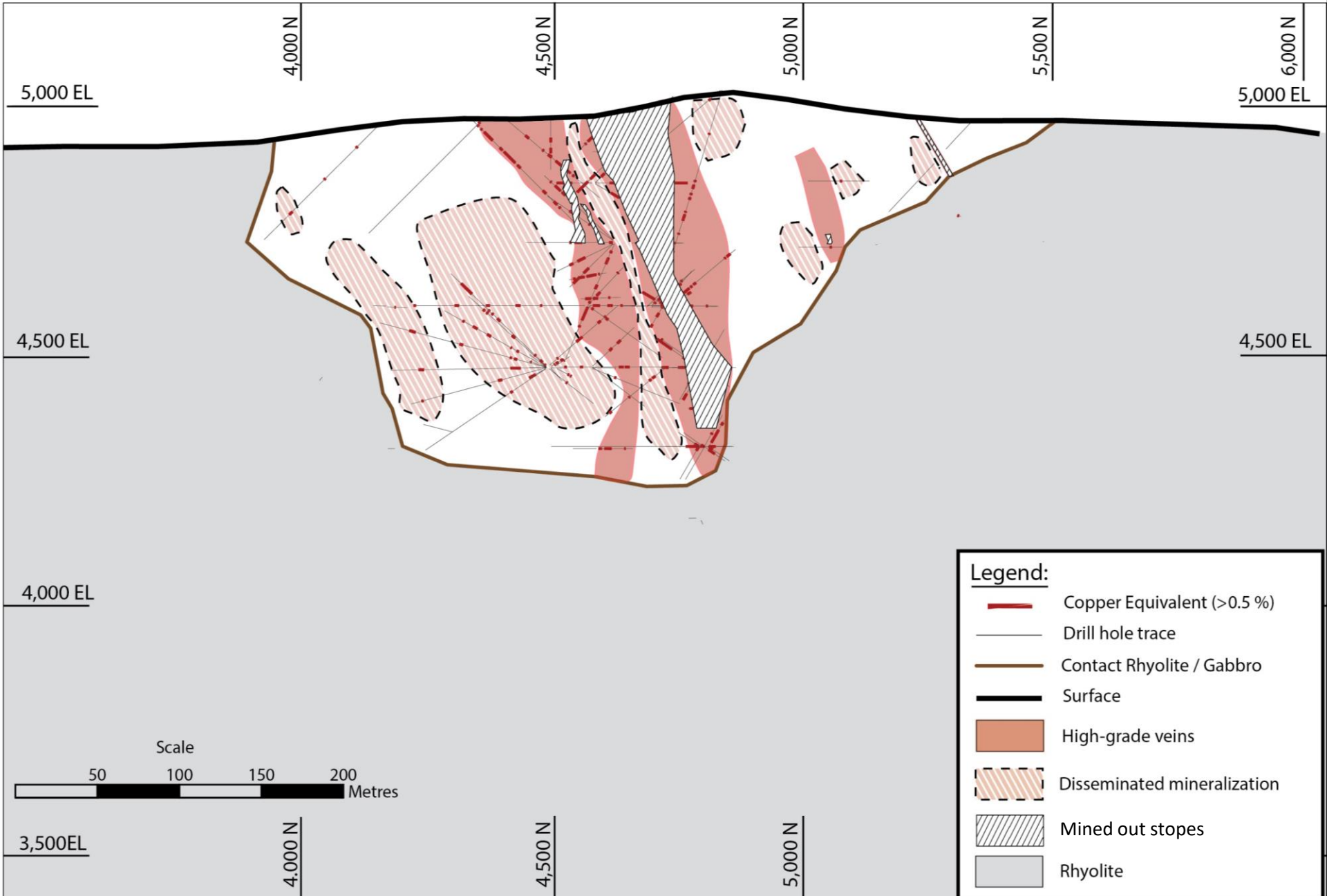
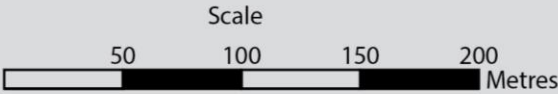


Opemiska Section 4450 E looking West



Legend:

- Copper Equivalent (>0.5 %)
- Drill hole trace
- Contact Rhyolite / Gabbro
- Surface
- High-grade veins
- Disseminated mineralization
- Mined out stopes
- Rhyolite



5,000 EL

4,500 EL

4,000 EL

3,500 EL

4,000 N

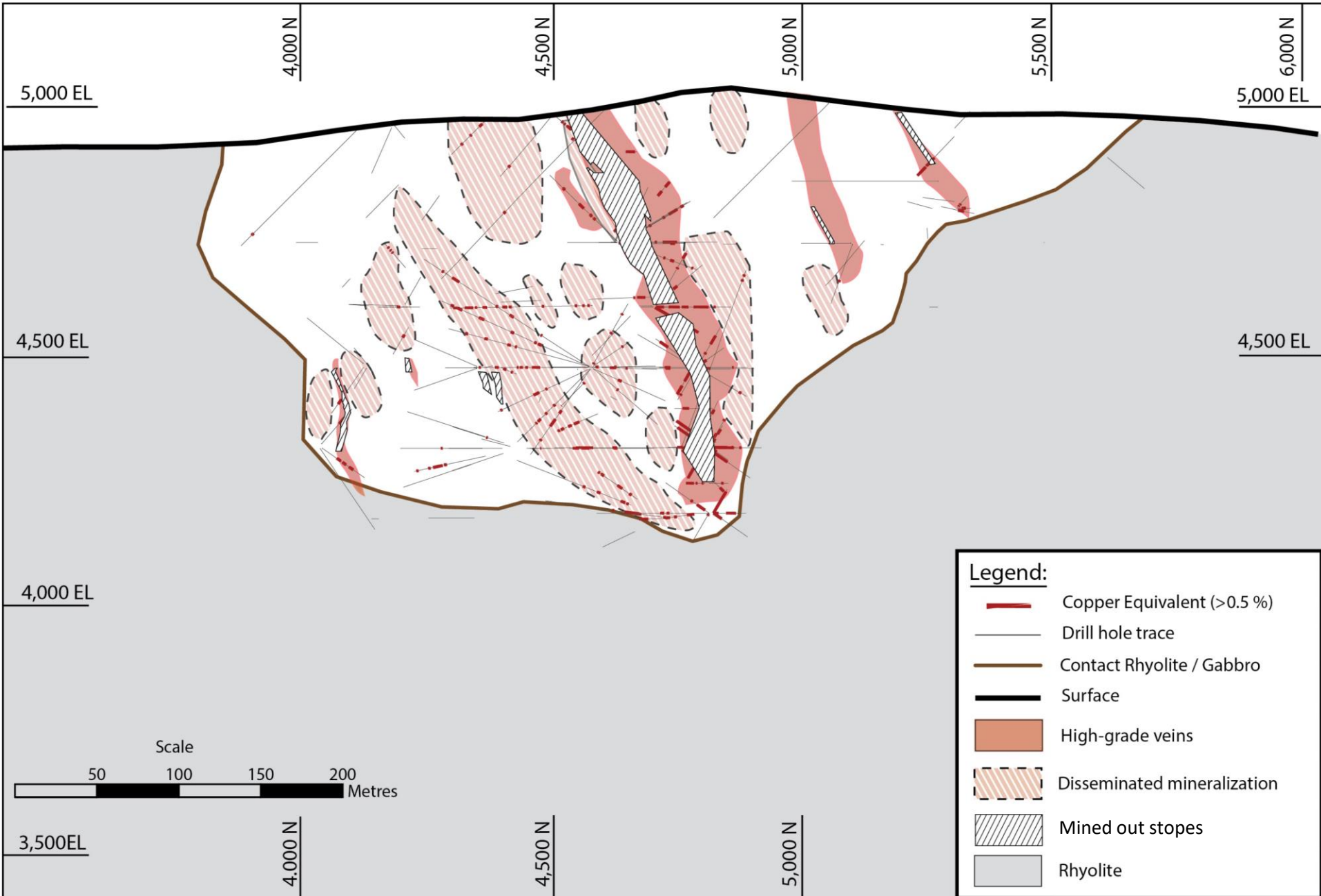
4,500 N

5,000 N

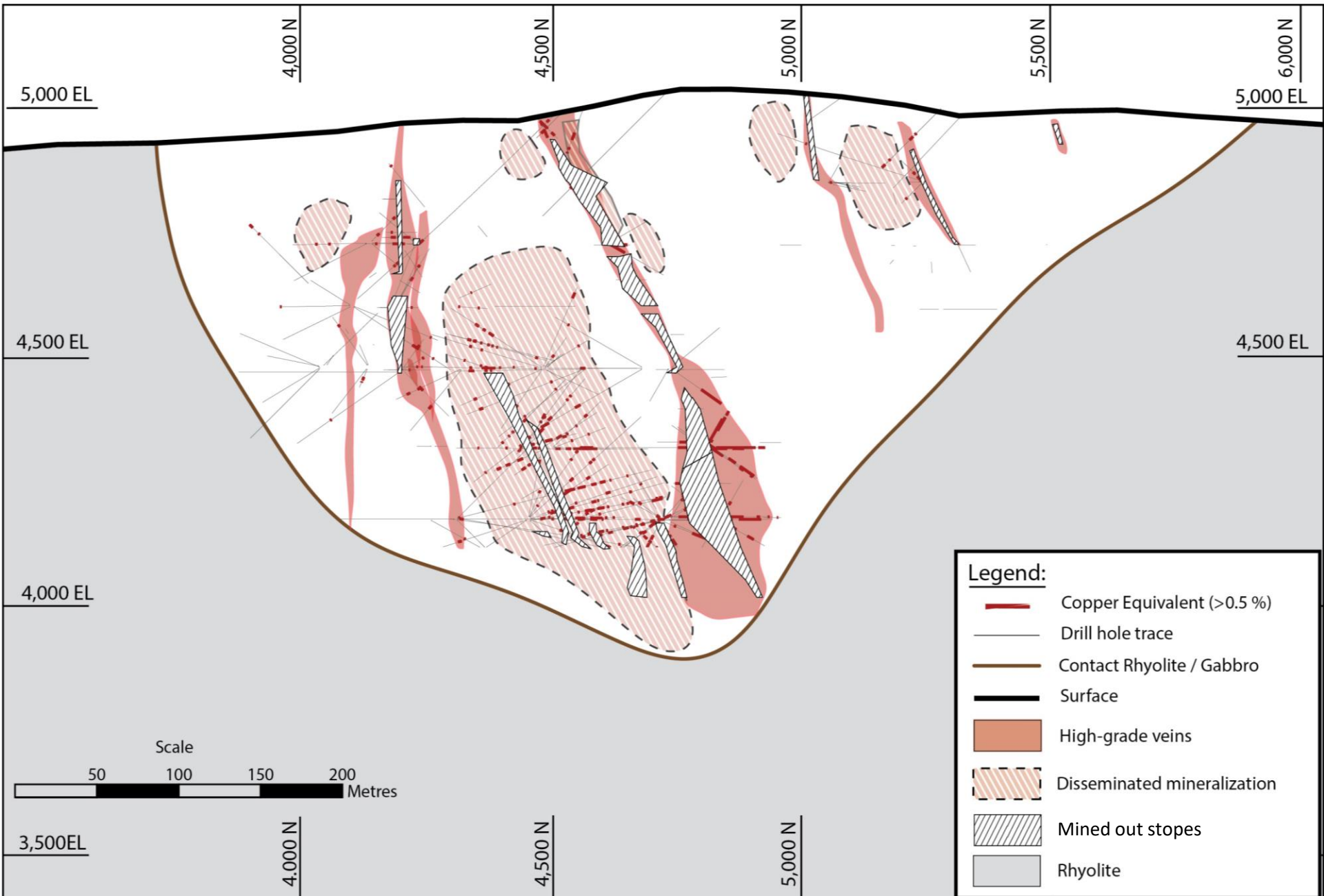
5,500 N

6,000 N

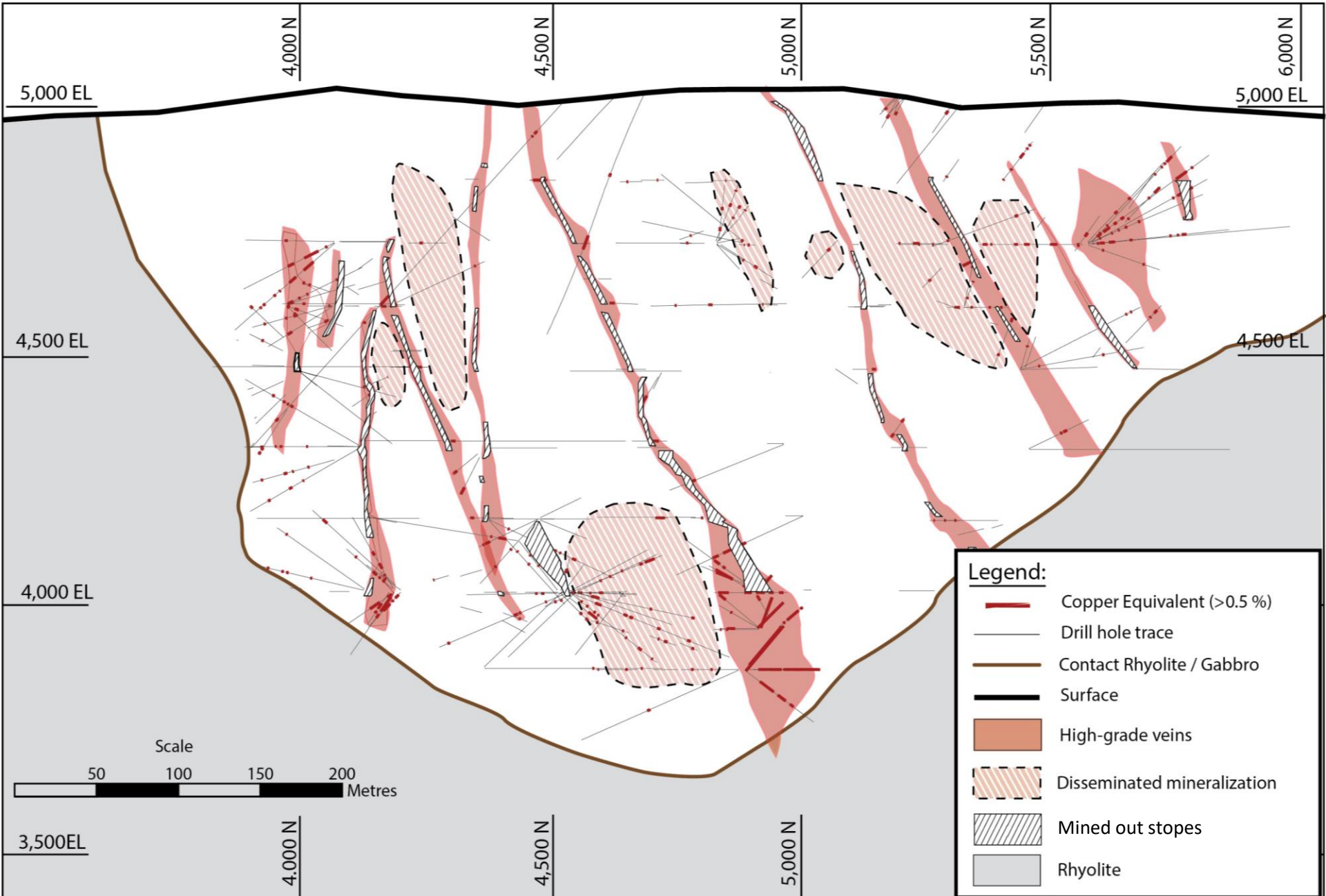
Opemiska Section 4550 E looking West



Opemiska Section 4700 E looking West



Opemiska Section 5000 E looking West



Opemiska Section Locations






 Perry Shaft

 Springer Shaft 1

 Springer Shaft 2

4450E
4550E
4700E
5000E

Legend:

-  Claim limit
-  Sections
-  Veins

0 100 200 300 400 500 m

